

## 2. minitest

Matematika B2, LS 2024/25

18. 3. 2025

Určete definiční obor a obor hodnot funkce.

$$f(x) = \log_{\frac{1}{8}}(-x^2 + 6x - 5)$$

$$f(x) = (b_2 \circ b_1)(x)$$

$$b_1(x) = -x^2 + 6x - 5$$

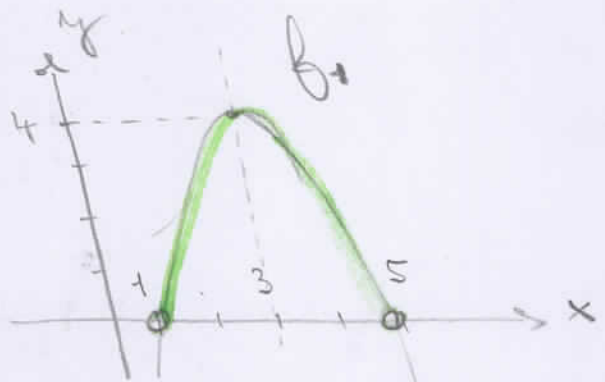
$$b_2(x) = \log_{\frac{1}{8}} x$$

$$-x^2 + 6x - 5 > 0$$

$$-(x^2 - 6x + 5) > 0$$

$$-(x-1)(x-5) > 0$$

$$x \in (1, 5)$$



$$D_f = (1, 5) \xrightarrow{b_1} (0, 4) \xrightarrow{b_2} \left( \log_{\frac{1}{8}} \frac{1}{8}, \infty \right)$$

$$H_f = \left( -\frac{2}{3}, \infty \right)$$

